

Swine Influenza 2009

- **A new strain of swine influenza virus (swH1N1)**
- **Large outbreak in Mexico**
 - 1324 suspect cases
 - 81 deaths reported (26 confirmed swH1N1)
 - Mexico City schools closed
- **91 U.S. cases so far (CA, TX, KS, NY, OH, AZ, MA, MI, IN, NV)**
 - Most illness mild, one death in Texas
- **Other countries now with confirmed cases**
 - Canada, Spain, Scotland, Israel
 - Suspect cases in Brazil, New Zealand, Taiwan

Timeline

- **March 18, 2009**: Reports from Mexican officials re severe “influenza like illness”
- **April 21, 2009**: CDC reports two cases of swine H1N1 in California
- **April 25, 2009**: 11 confirmed cases including CA, TX, KS, suspected in NY
- **April 26, 2009**: 20 confirmed/suspected cases, now also in OH
- **April 25-26, 2009**: WHO and CDC declare public health emergency

Key Points

- 1. This is a new virus**
 - Elements of swine, avian, human strains
- 2. Current year's vaccine (H1N1) probably won't provide protection, and population is likely to be non-immune**
- 3. There is sustained human-to-human transmission**

Sources of Information

- **Three best portals for up to date information are at CDC, IDPH and WHO websites:**
- <http://www.cdc.gov/swineflu/index.htm>
- http://www.idph.state.ia.us/adper/swine_flu.asp
- <http://www.who.int/csr/disease/swineflu/en/index.html>

What about Antivirals?

Circulating Strains	Oseltamivir	Zanamivir	Amantidine Rimantidine
Swine H1N1	S	S	R
Human H1N1	R	S	S
Human H3N2	S	S	R

- **Suspected influenza case (any type): Oseltamivir + amantidine/rimantidine, or zanamivir alone**
- **Confirmed Swine H1N1: Oseltamivir or zanamivir**
- **Prophylaxis: For close contacts of cases, those with high risk of complications, see guidance for details**

<http://www.cdc.gov/swineflu/recommendations.htm>

Infection Control Precautions

- **In hospital**: airborne + contact precautions, N95 respirators preferred
- **In home/community**: 6 foot distance, limit contact, surgical or N95 mask for contact in home, surgical mask if one must have close contact in crowded settings in communities with swH1N1 transmission

Standard precautions (hand hygiene, respiratory hygiene) emphasized for all

http://www.cdc.gov/swineflu/guidelines_infection_control.htm

UIHC Activities

- **Swine influenza site on The Point**
- **Housewide broadcasts**
- **Lab testing instructions sent to providers**
- **Script prepared for schedulers & Integrated Call Center**
- **Assigned responsibility to monitor activity in the ETC and clinics**

UIHC Activities

- **Investigating LIP coverage for UEHC**
- **Organizing a method to ensure that stations are stocked with surgical masks, tissues, hand hygiene gel**
- **Inpt & outpt order sets created in Epic production**
- **Educating staff**
- **Checked all airborne isolation rooms to ensure proper function**
- **Restrict access to antiviral drugs**

UIHC Activities

- **Collaborating with UI staff**
- **Collaborating with Johnson County Public Health Staff**

Antiviral Supplies

- **Current Supply**
 - **Oseltamivir 75 mg** **2960 capsules**
 - **Oseltamivir 45 mg** **60 capsules**
 - **Oseltamivir 30 mg** **60 capsules**
 - **Oseltamivir oral liquid 300 mg/bottle** **14 bottles**
 - **Zanamivir oral inhaler** **25 inhalers**
- **Ordering Restrictions**
 - **Oseltamivir capsules: restricted to 4 packages of 10 per account per day**
 - **Oseltamivir oral liquid: only short dated product available**
 - **Zanamivir oral inhaler: restricted to 1 inhaler per account per day**
- **Ordered product is not returnable**



Swine influenza is a new strain of influenza virus that is affecting many people in several states and countries.

Because this is a new strain, most people are unlikely to be immune.

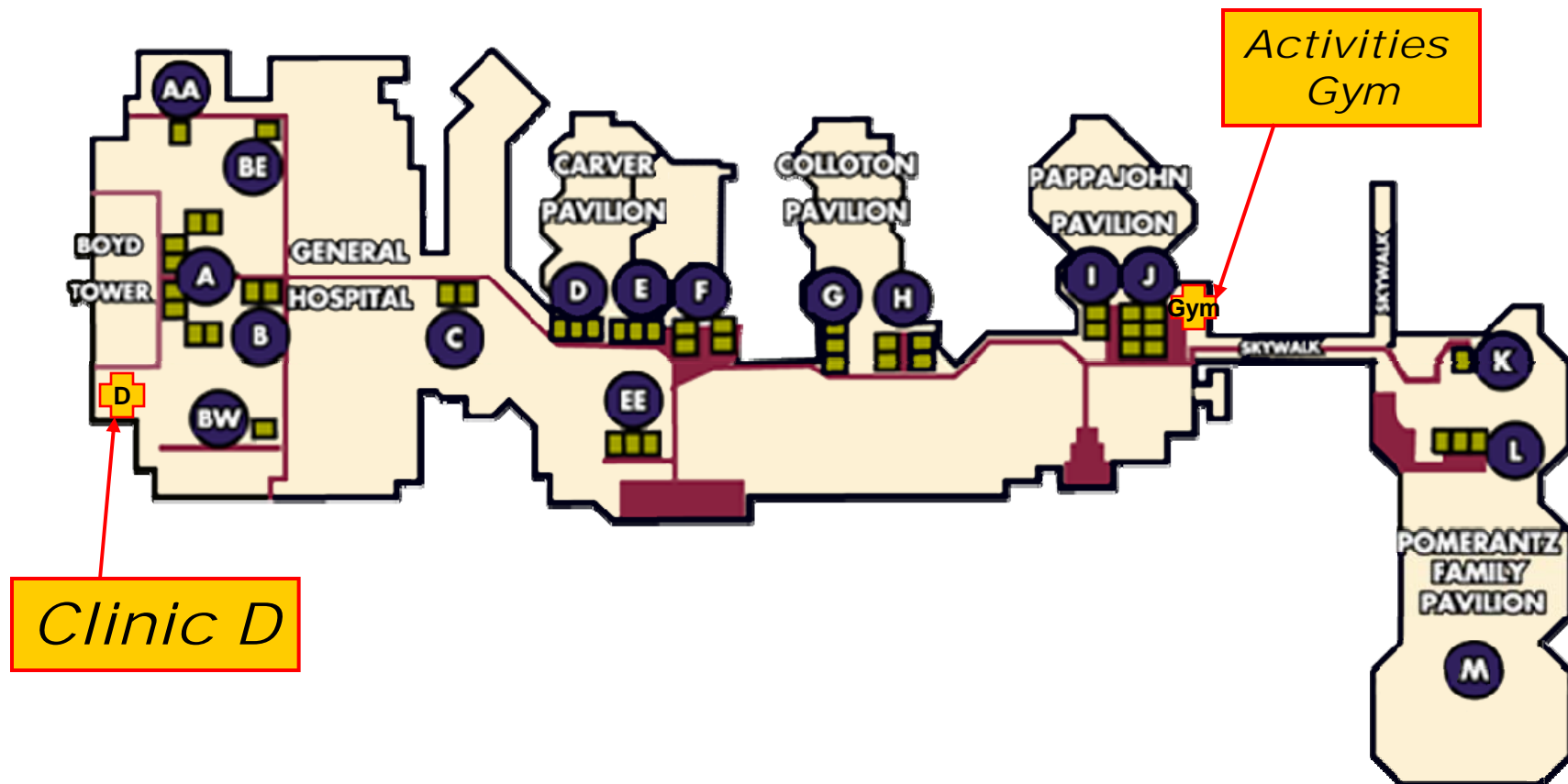
Please let the person at the reception desk know ***immediately*** if:

You became ill with the following symptoms:

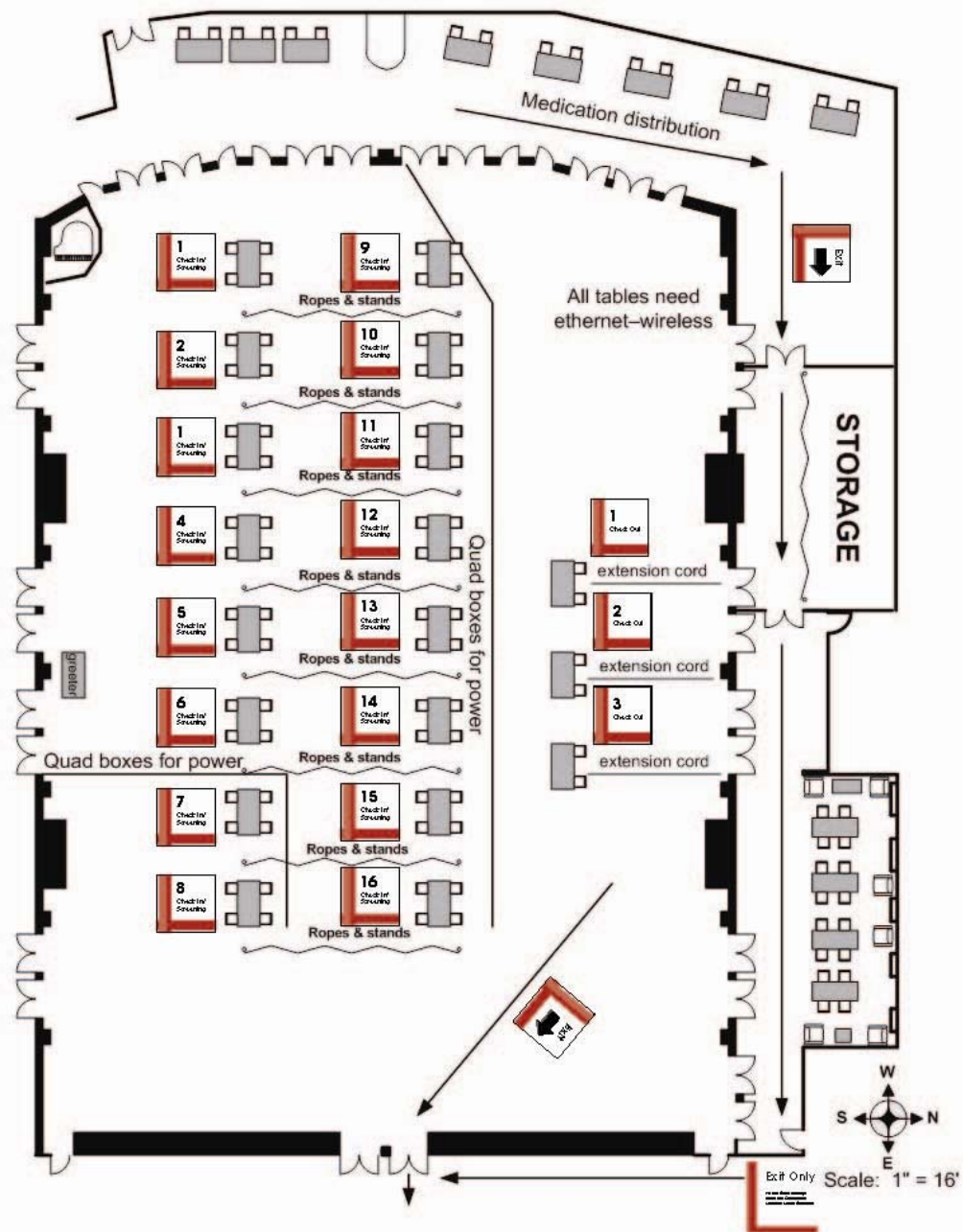
- If you have a temperature greater than 100 degrees Fahrenheit or 37.8 degrees Celsius ***and***
- Cough, sore throat, or other signs of respiratory illness ***and***
- Have recently traveled to areas in the U.S. ***or*** internationally where there are confirmed swine flu cases or have had contact* with someone within the past seven who has a confirmed case of swine flu.

*Close contact is defined as having cared for, having lived with, or having direct contact with respiratory secretions and/or body fluids of a patient known or suspected to have swine influenza.

Swine Influenza Clinics

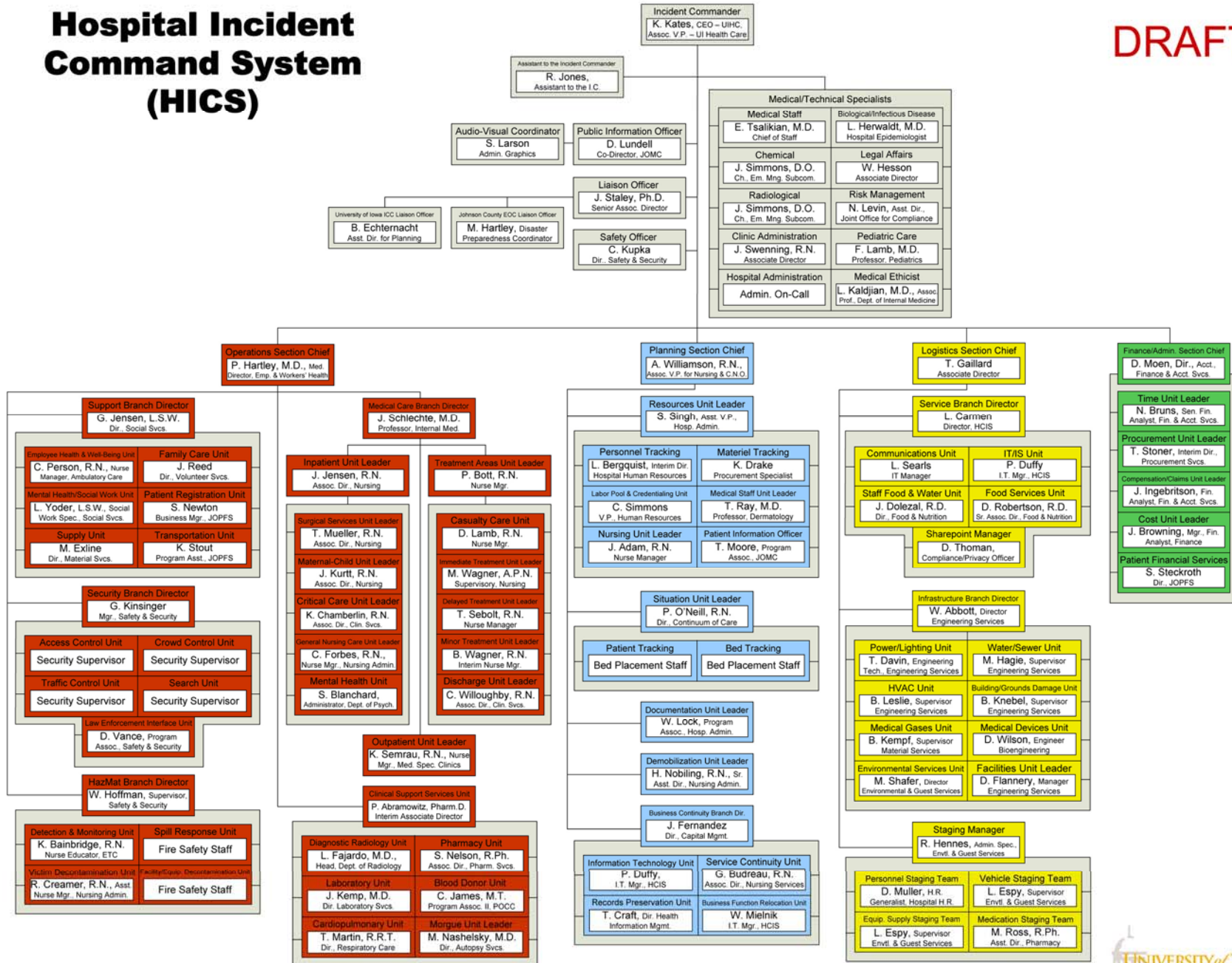


Main Lounge
Room 180

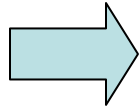
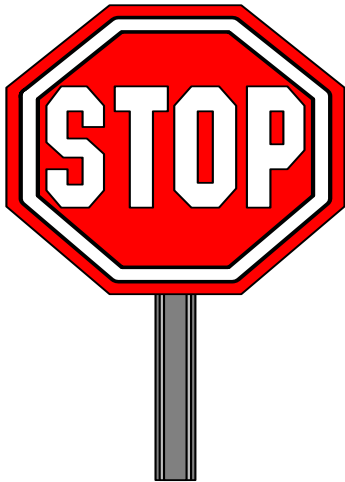


Hospital Incident Command System (HICS)

DRAFT



PERFORM HAND HYGIENE !

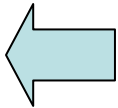
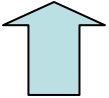
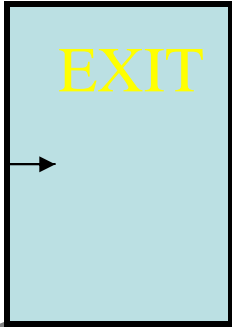


PUT ON !





REMOVE !



Important Steps

- **Review pandemic preparedness**
 - Antiviral, antibiotic, isolation supplies
 - Bed management protocols
 - Number/availability of isolation rooms
 - www.pandemicflu.gov
- **Enhance surveillance and prevention**
 - Review guidelines for testing
 - Review antiviral use guidance
 - Review infection control guidance

Defining Cases of swH1N1:

- **Confirmed**: febrile respiratory illness + lab confirmation (RT-PCR or viral cx at CDC)
- **Probable**: febrile resp illness + positive influenza A test but negative for H1 and N3 by RT-PCR (UHL testing), or positive influenza A test and meets suspect criteria below
- **Suspect**: febrile resp illness + onset ≤ 7 d after close contact with confirmed case, or residence in or travel to an area with confirmed cases

<http://www.cdc.gov/swineflu/specimencollection.htm>

Who to Test for swH1N1?

Febrile respiratory illness*, plus:

- **Residence in, or travel to, an area where swH1N1 infections have been confirmed**
- **Contact with a confirmed or suspected case of swH1N1 (within 7 days of sx onset)**
- **Contact with pigs**

As of 4/28, however, CDC website said, “Clinicians should consider the possibility of swine influenza virus infections in patients presenting with febrile respiratory illness.”

***Fever > 37.8°C (100°F) plus cough or sore throat**

How to Test for swH1N1?

- Preferred samples include nasal wash, nasopharyngeal (NP) aspirate, NP swab
- **Don PPE prior to obtaining sample!!!**
 - Gown, gloves, N95 mask, eye protection
- Indicate “swine flu suspected” on lab req
- Transport to lab on ice or refrigerate
- Lab will send sample to UHL, and from there to CDC for confirmation if suspect

<http://www.cdc.gov/swineflu/specimencollection.htm>