

Contact: Diana Gonzalez

**REQUEST TO CREATE A NEW SCHOOL OF EDUCATION AT IOWA STATE UNIVERSITY**

**Action Requested:** Consider approval of the request by Iowa State University to create a new School of Education in the College of Human Sciences.

**Executive Summary:** Iowa State University proposes to combine the Department of Curriculum and Instruction, Department of Educational Leadership and Policy Studies, associated centers, and the University Teacher Education Program to create the School of Education. This request has been reviewed by the Board Office and the Council of Provosts and is recommended for approval. This request addresses the Board of Regents Strategic Plan priorities to pursue “educational excellence and impact; and economic development and vitality.”

**Background:**

- ◇ History of current organization. In 2004, the Board of Regents approved ISU’s request to combine the College of Education with the College of Family and Consumer Sciences. The resulting entity was named the College of Human Sciences. The purpose of combining the two colleges was to create significant strategic advantages for faculty and students and to generate administrative savings to be reinvested in the academic work of the new college. The merger brought together a unique set of six departments.
- ◇ Description of proposed school. The proposed School will combine the Department of Curriculum and Instruction and the Department of Educational Leadership and Policy Studies. Partnerships among the participating departments will allow the proposed School to provide enriched education for its students and to enhance the quality of its scholarship. The proposed School will provide the following benefits:
  - ⇒ Better address the challenges facing education in Iowa and nationally by demonstrating collaboration across teacher and administrator preparation, areas of content expertise and partnerships with multiple partners beyond the university setting.
  - ⇒ Achieve greater visibility within the university, state, and nation.
  - ⇒ Create a greater sense of unity, cohesion, and shared mission across education programs at ISU.
  - ⇒ Build on strengths of current programs while increasing potential for collaboration across programs within ISU.
  - ⇒ Provide greater efficiency of human and financial resources.
- ◇ Reason for proposed change. The proposed School of Education will join the two departments administratively and programmatically as well as improve the work of other units in the College. The purpose is to create a world-class school with a unique, holistic program that sets ISU’s overall education program apart from its sister institutions.

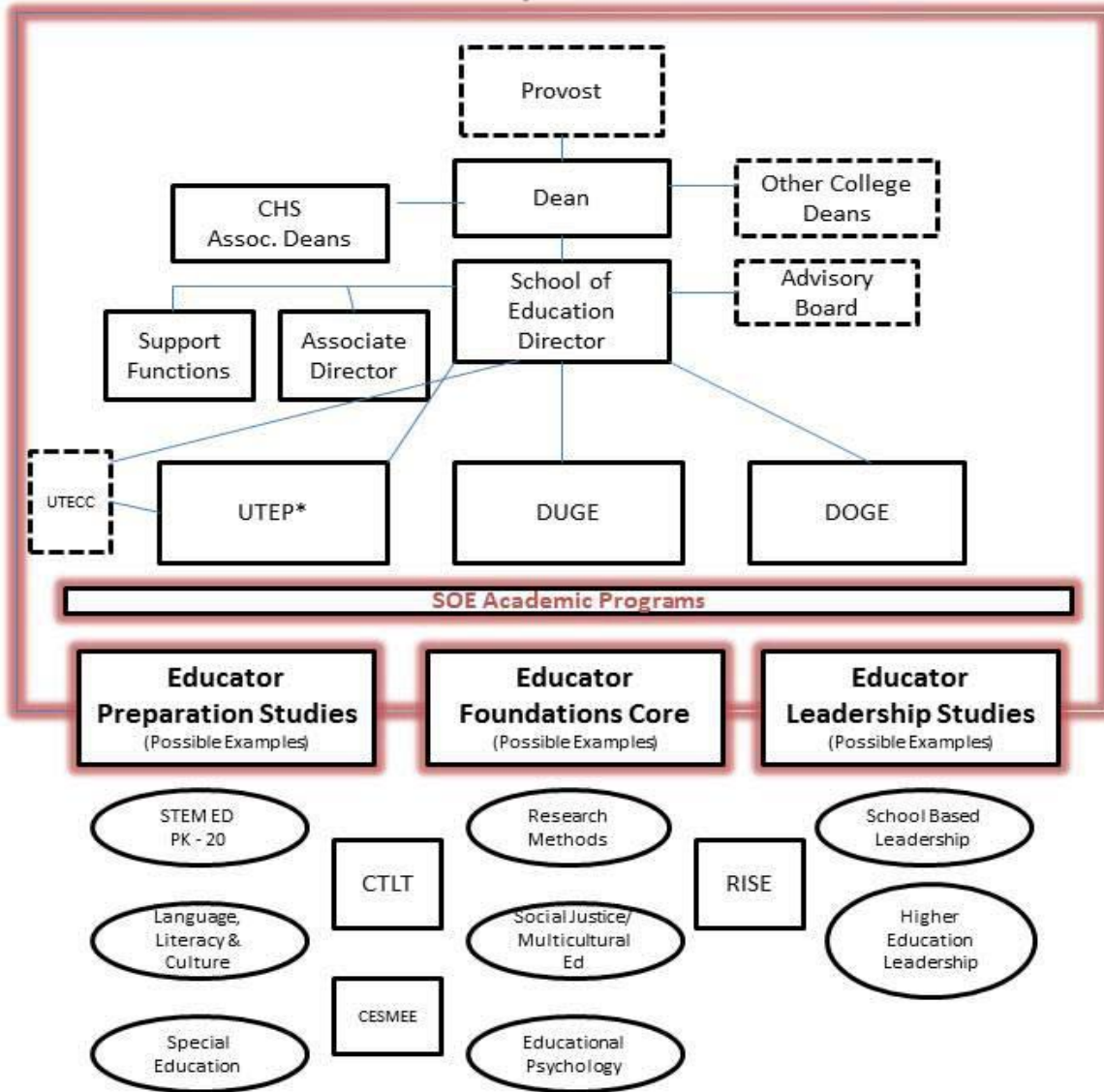
- ◇ Administrative organization. The proposed School will be administered by a director and assistant director. The three divisions created - Educator Preparation Studies; Educator Foundation Core; and Educator Leadership Studies – will each have a division coordinator. The assistant director and the division coordinators will have reduced course loads to perform the necessary duties related to the position. The proposed organizational structure is described in Attachment A.
- ◇ Assumptions and principles of proposed School. To develop a proposal for the creation of the School, the Transition Leadership Committee in the College of Human Sciences adopted the following assumptions and principles:
  - ⇒ The two founding departments have an equal contribution to make to a combined school and the new administrative structure, leadership, and management should honor that balance.
  - ⇒ The savings generated by the plan will be fully reinvested in the proposed school. The highest priority for the reallocated funds will be new faculty lines.
  - ⇒ All current academic programs for undergraduate, graduate, and continuing education students will be retained.
  - ⇒ Procedures, policies, or practices will continue unless appropriate review and approval is conducted according to university policy.
  - ⇒ During the transition period, the University will work with the College of Human Sciences to support and facilitate the needed procedural changes resulting from the combination (e.g., advertising materials, web site development).
  - ⇒ The work group proposals generated during the review process are guidelines to key issues as the proposed school is established. They also identify issues that will require additional consideration and faculty/staff input as the proposed school is established.
- ◇ Proposed vision. The proposed School of Education will be a premier leader in education based on a strong foundation in the humanities and social sciences with emphasis in leadership, science, technology, engineering and mathematics (STEM) education. The School will advance research and scholarship in the areas of teaching, learning, and leadership and in the preparation of professionals for educational environments across multiple settings.
- ◇ Proposed mission. The mission of the proposed School of Education will be to create, share, and apply knowledge and advocate for equal educational opportunities and socially responsible educational reform in Iowa, the nation, and the world. The proposed School will prepare excellent research-informed educators, researchers, administrators, and others in educational roles.
- ◇ Impact on resources. The proposed School will combine two department administrative offices into one school office which will save administrative positions. Instead of two department chairs, there will be one director; instead of two department officers in graduate education, there will be one. The total projected savings are expected to be \$200,000. The College proposes to use the savings to hire additional faculty and staff to enhance the quality of the programs offered in the School.

- ◇ Comparable name at other institutions. The name, School of Education or College of Education, is used widely throughout the United States. Other institutions having schools of education or schools of teaching and learning (another term sometimes used to denote activities similar to those proposed within the School of Education at ISU) within a college structure include Clemson University (School of Education); Colorado State University (School of Education); Ohio State University (School of Teaching and Learning); University of Florida (School of Teaching and Learning); Oklahoma State University (School of Educational Studies; School of Teaching and Curriculum Leadership); and University of Rhode Island (School of Education).
- ◇ Effect on students. There will be no direct impact on students because their programs will continue to be offered as currently available. Program configuration changes are not expected as a result of the proposed creation of the School.
- ◇ Date of implementation. The proposed creation of the School of Education will become effective upon approval by the Board of Regents and is projected to become operational in July 2012.

PROPOSED ORGANIZATION CHART

Proposed

4/26/11



•While UTEP still remains under CHS – UTECC serves as a university-wide body.  
•Note: Dotted boxes indicate individuals not directly within the SOE