

ANNUAL REVIEW OF PEER GROUP COMPARISONS

Action Requested: Receive the report.

Executive Summary: At its June 6, 2012, meeting, the Committee requested that Wilshire Consulting provide an annual report on how the Regent endowment portfolios perform relative to their peer groups.

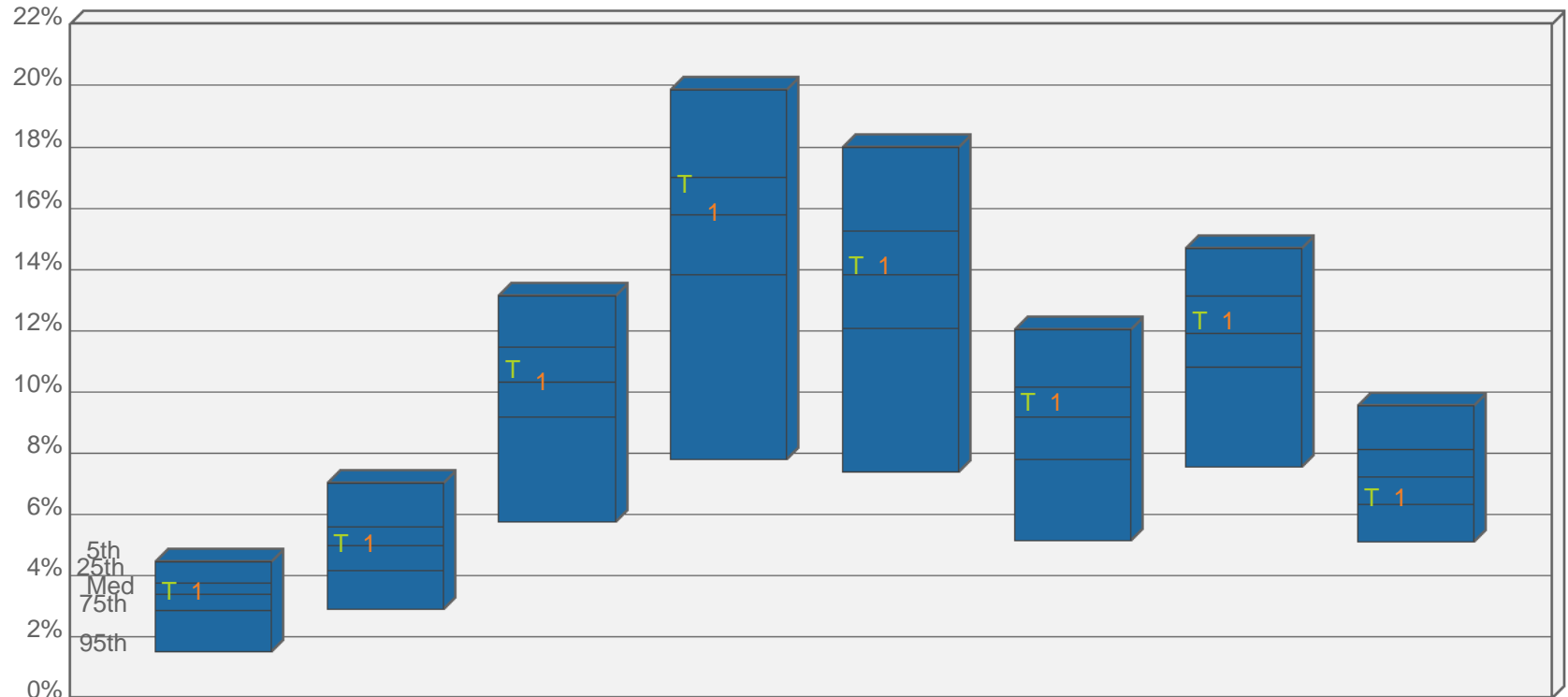
This is the third annual report and is for the periods ended June 30, 2014.



Board of Regents – State of Iowa
Peer Universe Comparison
Periods Ended June 30, 2014

Total Endowment Composite

Periods Ended June 30, 2014

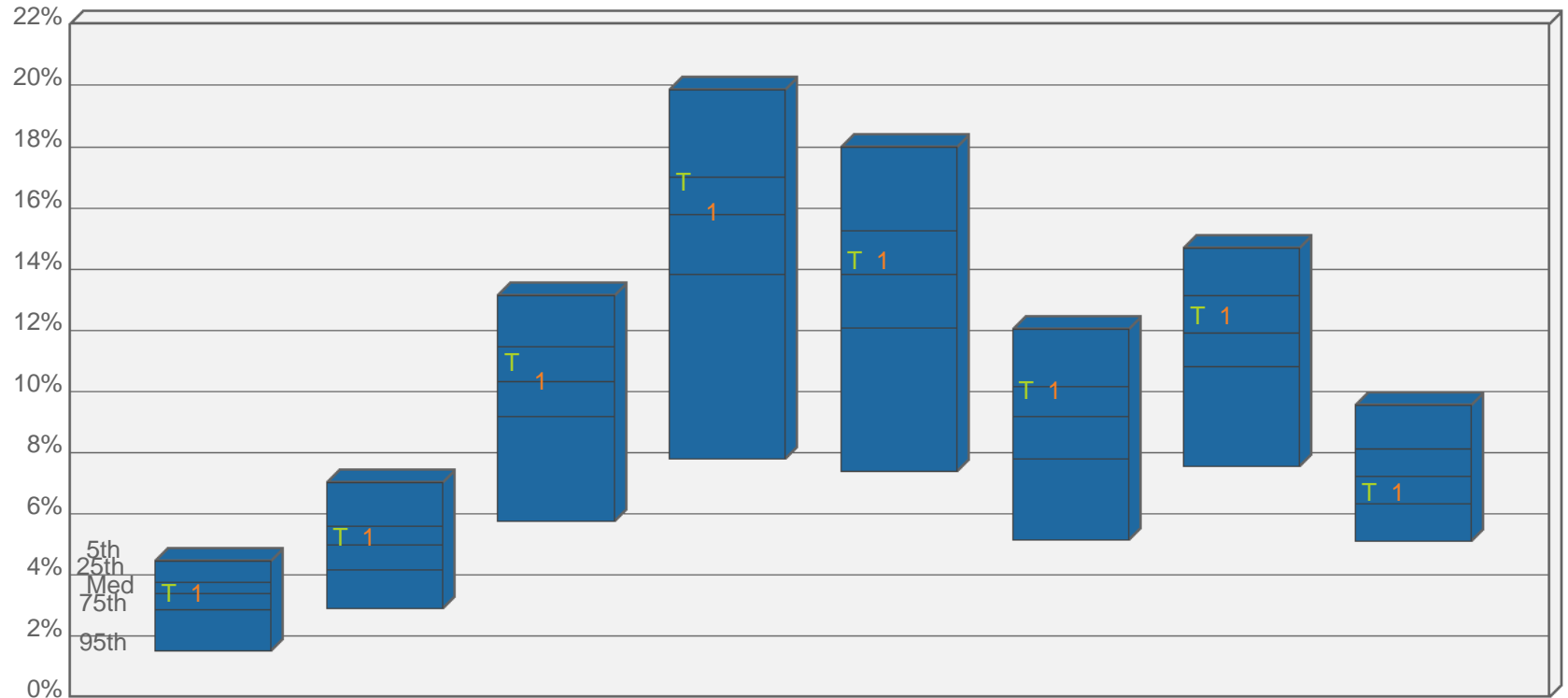


	1 Quarter	2 Quarters	3 Quarters	1 Year	2 Years	3 Years	5 Years	10 Years
T Total Endowment	3.48 (46)	5.06 (47)	10.75 (40)	16.78 (29)	14.12 (43)	9.66 (37)	12.33 (42)	6.55 (72)
1 Policy Index	3.53 (41)	5.06 (47)	10.34 (49)	15.87 (48)	14.35 (38)	9.80 (34)	12.38 (41)	6.84 (63)
5th %tile	4.47	7.04	13.15	19.87	17.97	12.03	14.70	9.56
25th %tile	3.76	5.60	11.48	17.02	15.26	10.15	13.12	8.12
Median	3.38	4.98	10.32	15.80	13.81	9.18	11.93	7.22
75th %tile	2.85	4.16	9.17	13.81	12.08	7.80	10.80	6.33
95th %tile	1.52	2.91	5.77	7.78	7.41	5.16	7.56	5.09
Number of Funds	296	296	287	286	270	251	223	145

*Wilcop Total Returns of Total Fund Eleemosynary Plans Universe - Gross of Fees

Total Endowment Composite

Periods Ended June 30, 2014



	1 Quarter	2 Quarters	3 Quarters	1 Year	2 Years	3 Years	5 Years	10 Years
T Total Endowment	3.41 (49)	5.25 (37)	10.95 (35)	16.85 (27)	14.27 (40)	10.04 (27)	12.48 (40)	6.71 (67)
1 Policy Index	3.53 (41)	5.06 (47)	10.34 (49)	15.87 (48)	14.35 (38)	9.80 (34)	12.38 (41)	6.84 (63)
5th %tile	4.47	7.04	13.15	19.87	17.97	12.03	14.70	9.56
25th %tile	3.76	5.60	11.48	17.02	15.26	10.15	13.12	8.12
Median	3.38	4.98	10.32	15.80	13.81	9.18	11.93	7.22
75th %tile	2.85	4.16	9.17	13.81	12.08	7.80	10.80	6.33
95th %tile	1.52	2.91	5.77	7.78	7.41	5.16	7.56	5.09
Number of Funds	296	296	287	286	270	251	223	145

*Wilcop Total Returns of Total Fund Eleemosynary Plans Universe - Gross of Fees