

Contact: John Nash

INSTITUTIONAL AGREEMENTS, LEASES AND EASEMENTS

Action Requested: The University of Iowa requests Board approval of one easement. Iowa State University requests Board approval of one easement.

- *Iowa Code* §262.9 (8) authorizes the Board of Regents to acquire real estate for the proper uses of the institutions and dispose of real estate, when not necessary for their purposes.
- *Policy Manual* Chapter §2.3, part 2.E requires Board approval of leases over 10,000 gross square feet, more than \$150,000 in annual base rent or more than five years in duration.

Item #1: UI Easement: UI would grant a permanent utility easement to the City of Coralville for the City to build a new sanitary sewer across a corner of the UI's Oakdale campus.

Item #2: ISU Easement: ISU would grant a permanent utility easement to the City of Ames to relocate overhead electrical power lines.

Item #1 of 2
UI Easement

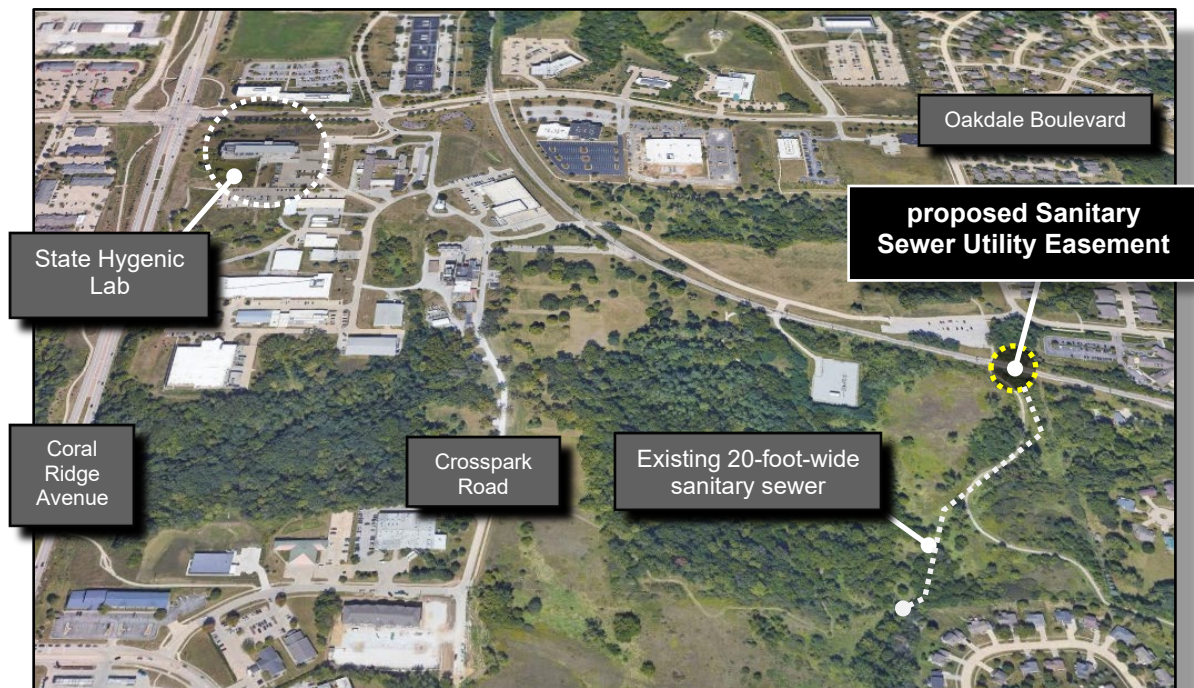
Executive Summary: UI would grant a permanent utility easement to the City of Coralville for the City to build a new sanitary sewer and force main, a pressurized pipeline which conveys wastewater, on the UI's Oakdale campus.

Background: The easement's total area would be 2,232 square feet and would be adjacent to an existing pedestrian trail system. The campus planning team reviewed the easement and determined it to have minimal impact on any long terms plans for this area of the Oakdale campus.

The easement agreement would be standard and would require the City of Coralville to indemnify and hold the University of Iowa, the Iowa Board of Regents, and the state of Iowa harmless for any liability associated with the easement.

Cost: \$0. As consideration, however, the UI and the City of Coralville would trade the City's use of the easement for improved utility services to the UI's Oakdale campus.

Term: perpetuity



University of Iowa's Oakdale Campus

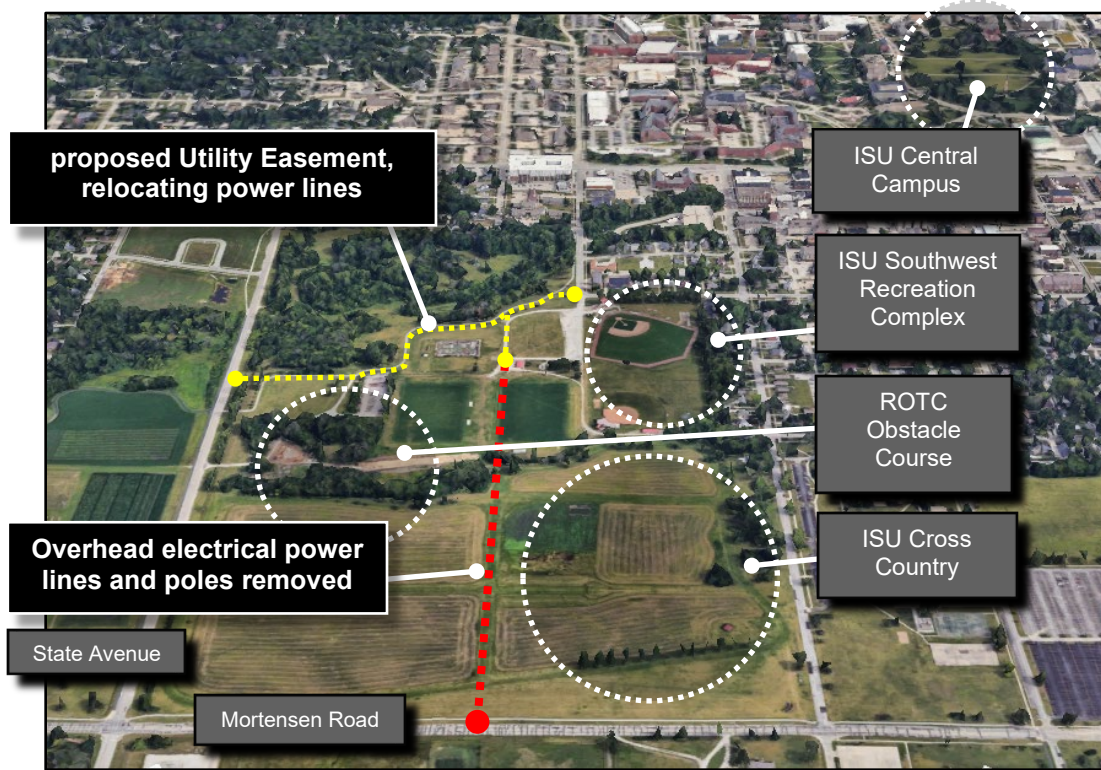


Item #2 of 2
ISU Easement

Executive Summary: Iowa State University requests Board approval of a permanent utility easement to the City of Ames for the City to relocate overhead power lines running through ISU's Cross Country Course, Southwest Recreation Complex and ROTC Obstacle Course. The new route would run along South Sheldon Avenue.

Cost: \$0. As consideration, however, ISU and the City of Ames would trade the City's use of the easement for improved utility services to the ISU campus.

Term: perpetuity



Southwest of Iowa State University's Central Campus

